

ENCOR

- Platform Setup Guide,
- Microsoft SQL 2008 Express R2
- Version 1.0.0.0
-
-



ENCOR Platform Setup Guide, Microsoft SQL 2008 Express R2

Date of Issue	Product ID Num.	Part Number	Brief Description
December 2017	45002/074	89000910	1.0.0.0 Release
January 2018	45002/074	89000924	1.0.0.0 Release (Updated)

©Copyright NCR Corporation 1995-2018
All rights reserved

This publication is protected by federal copyright law. This document and its contents are the proprietary, confidential information and property of NCR Corporation ("NCR"). Unauthorized disclosure, reproduction, distribution or use of this document and/or its contents in any form is strictly prohibited. No part of this publication may be reproduced or transmitted into any human or computer language in any form or by any means, stored in a retrieval system, transmitted, redistributed, translated or disclosed to third parties, or de-compiled in any way including, but not limited to, photocopy, photograph, electronic, mechanical, magnetic or manual without the express written permission of NCR or its licensors, if any. This document, notwithstanding the above, may be distributed in electronic or printed form by NCR to personnel who are employed by either (a) a licensee and end user of the subject system of this document or (b) personnel from an authorized NCR Channel Partner or Solution Provider of the subject system of this document. All copies of this document so distributed and/or so authorized, shall contain a full copy of this copyright notice.

NCR has prepared this document as a guide to the proper installation, operation, customization and/or maintenance of NCR products. The drawings and specifications contained herein are the property of NCR and/or its licensors.

NCR endeavors to ensure that the information in this document is correct and fairly stated but does not accept liability for any error or omission. NCR makes no representation or warranties with respect to the contents hereof, and specifically disclaims any implied warranties of merchantability or fitness for a particular purpose or non-infringement. No commitments by NCR or its suppliers are made by or from this documentation which is provided for information only.

Development of NCR products and documentation is continuous: NCR reserves the right to revise this publication and to make changes at any time to the contents hereof or to the products herein described or discussed without notice and without any obligation for NCR to notify any person or organization of such revision or changes. Information published in this document will likely be superseded, and it is recommended that users regularly check for updates and newer versions.

The trademarks NCR, Retailix, StoreNext, ISS45, ScanMaster, R10, ACS, PocketOffice, RPO, RBO, ABO, Connected Payments, ServerEPS, Connected Services, Connected Loyalty, WinEPS and all other NCR product names are registered trademarks or trademarks of NCR; all other trademarks or registered trademarks are the property of their respective owners. Third-party products, services, or company names referenced in this document may be trademarked or copyrighted by their respective owners, and are for identification purposes only. Copyrights, trademarks and license agreements shall be governed and construed in accordance with the laws of the State of New York and the Federal Arbitration Act, and shall benefit NCR, its successors, and assigns.

Address comments and corrections regarding this document to:

Attn: Software Program Director
NCR
797 Commonwealth Drive
Warrendale, PA 15086

Table of Contents

<i>Chapter 1:</i>	Overview	1-1
<i>Chapter 2:</i>	Microsoft® SQL Server® 2008 Express Installation	2-1
<i>Chapter 3:</i>	Backwards Compatibility (SQLDMO) SQLServer2005_BC.msi	3-10
<i>Chapter 4:</i>	Enable Named Pipes	4-1
<i>Chapter 5:</i>	Disable Data Execution Prevention (DEP)	5-1

Revision Record

Issue	Date	Remarks
A	Dec 2017	First issue

Chapter 1: Overview

Note:

The **SQL** CD is labeled Microsoft SQL Server 2008 R2 Express Edition (with Tools) Part # 89000823 – Release Date 3/11/2015.

This document will guide you through the installation of:

- SQL Server 2008 Express R2 with Tools
- SQLDMO pack install.
- Enabling Named Pipes
- Disabling Data Execution Prevention (DEP)

The minimum recommended hardware requirements for SQL 2008 Express R2 (32-bit/64-bit) with **ENCOR** are:

- CPU = P4 - 2.0 GHz or higher
- RAM = 4 GB or higher
- HD = 80 GB or higher

Software requirements for MFS1 are:

- Windows 7 Professional
- Windows Server 2008 Standard Server/ Windows Server 2008 R2

Note:

Windows Server 2000 is no longer supported by SQL Server 2008.

Prerequisites (* = Installed by installation wizard if they do not exist)

- .Net Framework 3.5sp1
- SQL Server Native Client*
- SQL Server Setup Support Files*
- Internet Explorer 7
- SQLDMO Pack (backward compatibility)

Note:

The user must be logged into Windows as the Administrator User when installing any **ENCOR** related applications on MFS1, an LFS workstation, or POS terminal.

Chapter 2: Microsoft® SQL Server® 2008 Express Installation

1. The POWERSHELL feature needs to be installed in Server 2008. (Not necessary on Windows 7 system.) Go to **Start > Server Manager > Add Features** and select **Windows PowerShell**.

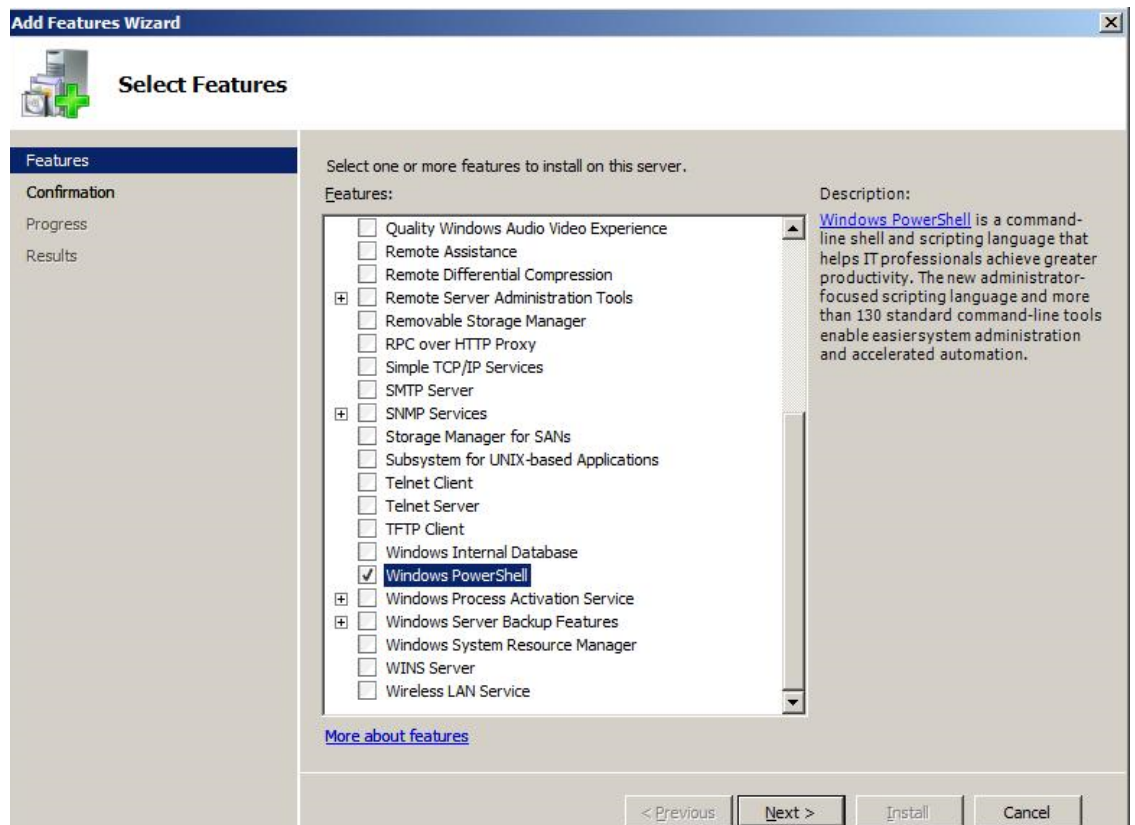


Figure 2-1. Server Manager - Add Features Wizard

2. When complete:

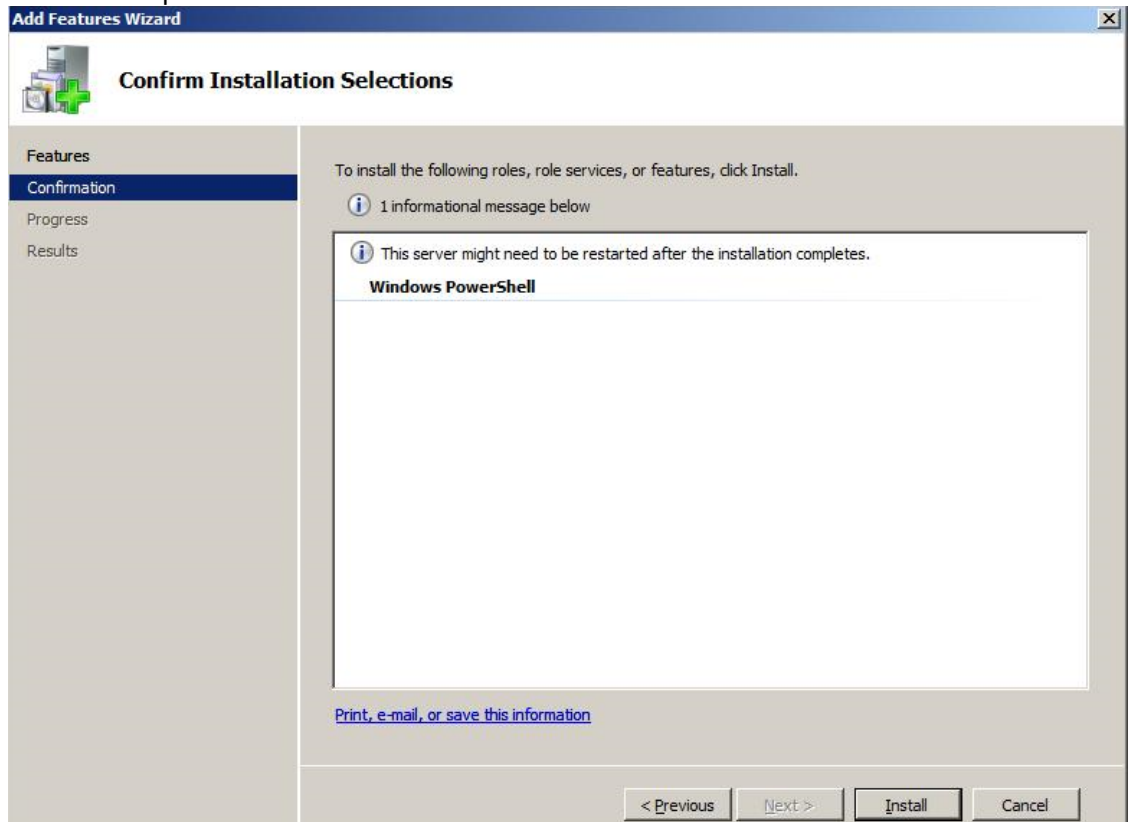


Figure 2-2. Add Features Wizard - Confirm Installation Selections

3. From the CD or from the folder containing the SQL source files, right click **en_sql_server_2008_r2_express_edition_with_tools_with_service_pack_1_x86_713477.exe** and run as administrator. SQL Server Installation Center is displayed.
4. If Microsoft .net 3.5 SP1 and Microsoft Windows Installer 4.5 are not installed, you will get the following message:

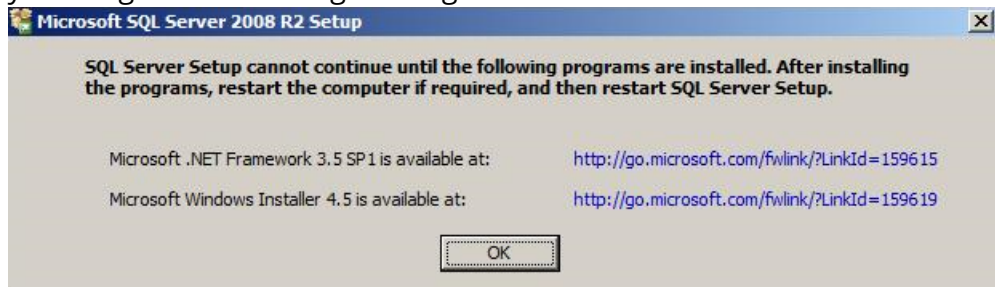


Figure 2-3. SQL Server 2008 R2 Setup

5. Click on each to install and reboot. Then restart the installation.
6. Click **New Installation**. The License Terms screen is displayed.
7. Approve the license agreement by checking I accept the license terms.

8. Click . The SQL Server 2008 R2 Setup screen displays.

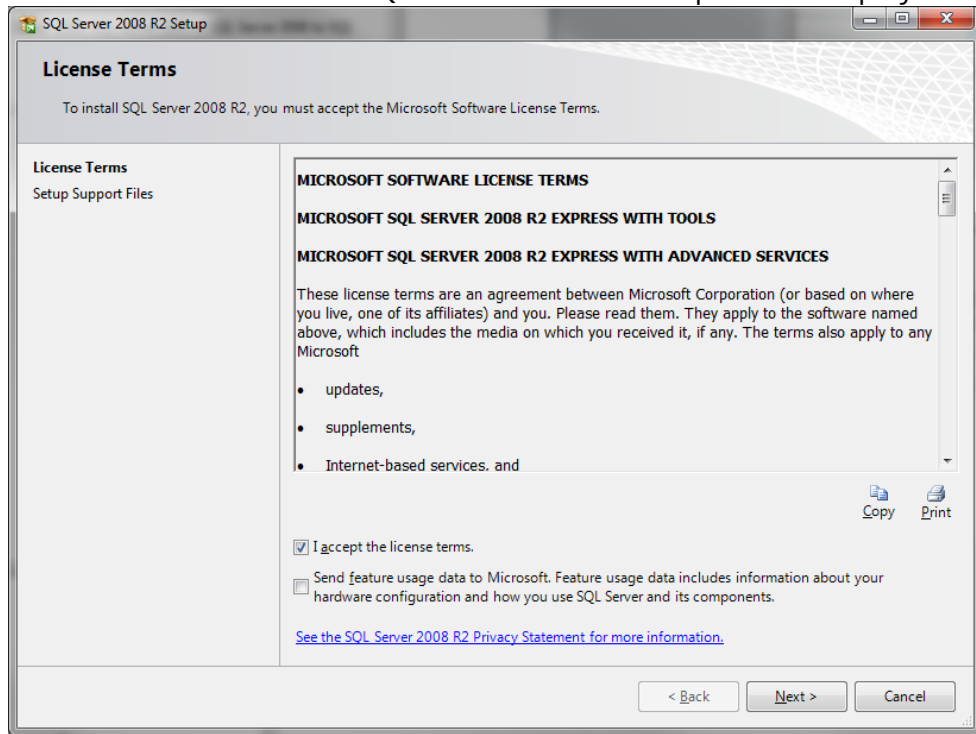


Figure 2-4. SQL Server 2008 R2 Setup. License Terms

9. Installation will automatically begin.

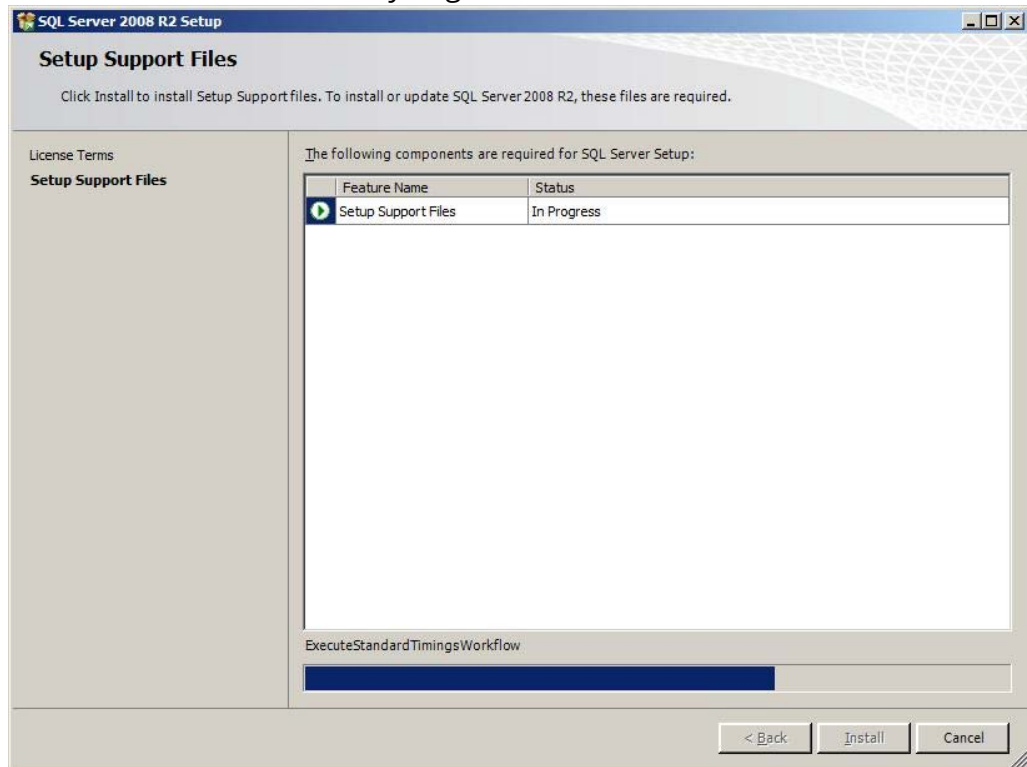


Figure 2-5. SQL Server 2008 R2 Setup - Setup Support Files

10. Select **Database Engine Services, SQL Server Replication, and Management Tools – Basic**. Uncheck **SQL Client Connectivity SDK**.

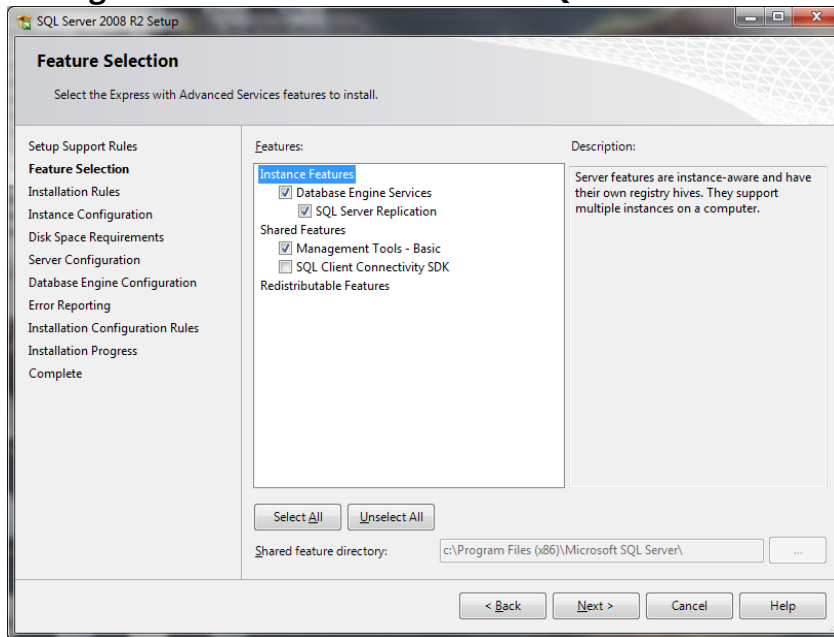
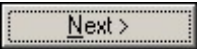


Figure 2-6. SQL Server 2008 R2 Setup - Feature Selection

11. Click .
12. Choose **Default Instance**.

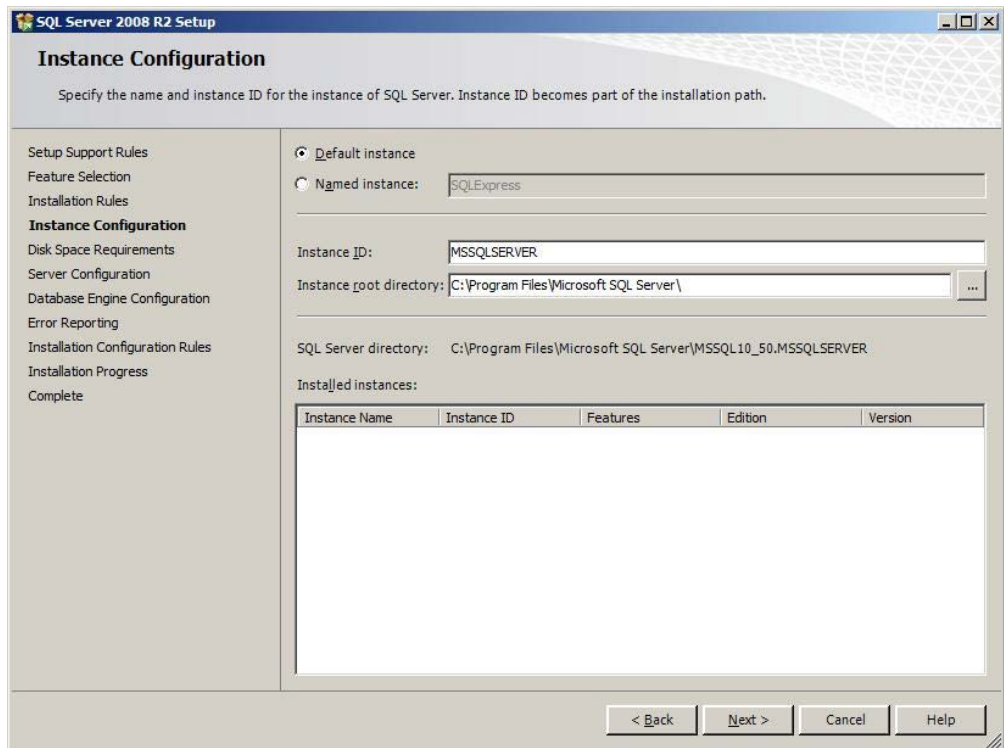


Figure 2-7. SQL Server 2008 R2 Setup - Instance Configuration

13. Click .

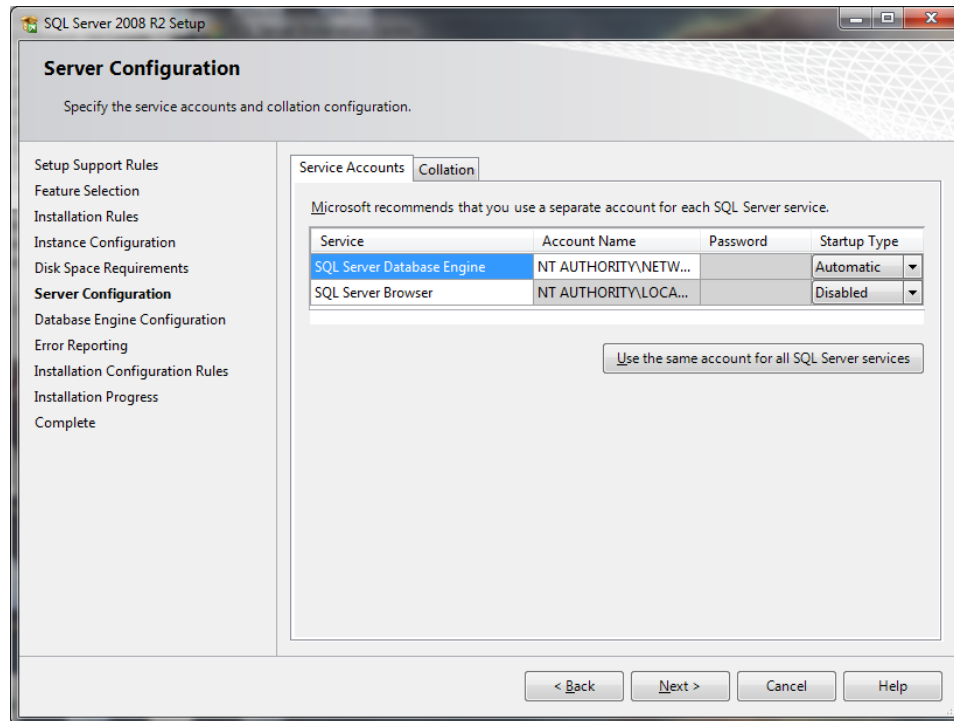
14. Click **Use the same account for all SQL Server services**.

Figure 2-8. SQL Server 2008 R2 Setup - Server Configuration - Service Accounts Tab

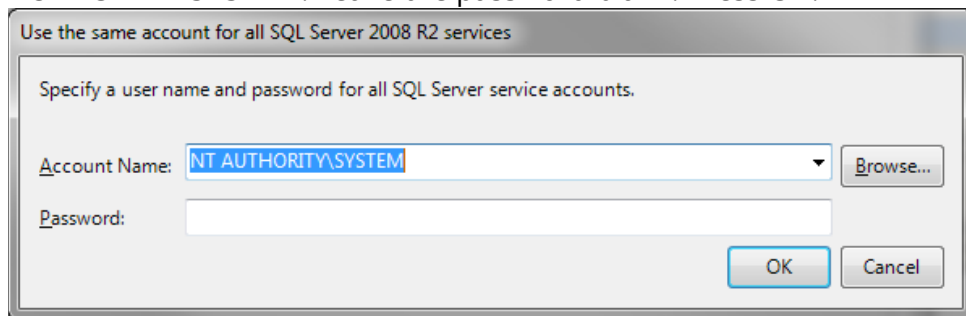
15. Click the Account Name field drop-down button and select **NT AUTHORITY\SYSTEM**. Leave the password blank. Press **OK**.

Figure 2-9. SQL Server 2008 R2 Setup - Same Account

- For the SQL Server Browser Service, choose **Automatic** from the Startup Type field drop-down button.

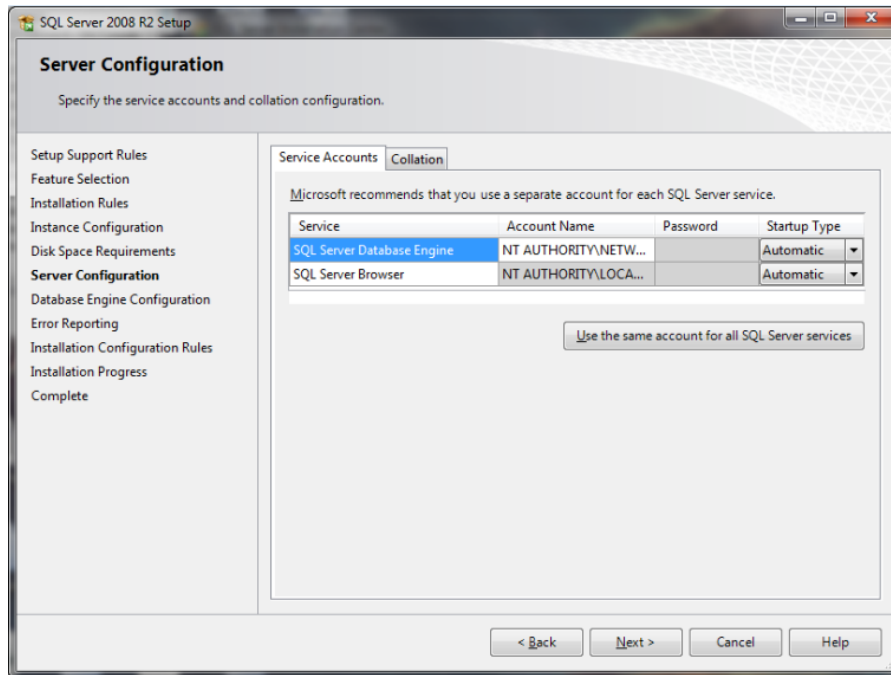


Figure 2-10. SQL Server 2008 R2 Setup - Server Configuration - Service Accounts Tab

- Click on **Collation Tab** and insure the collation is configured as: **SQL_Latin1_General_CP1_CI_AS**.

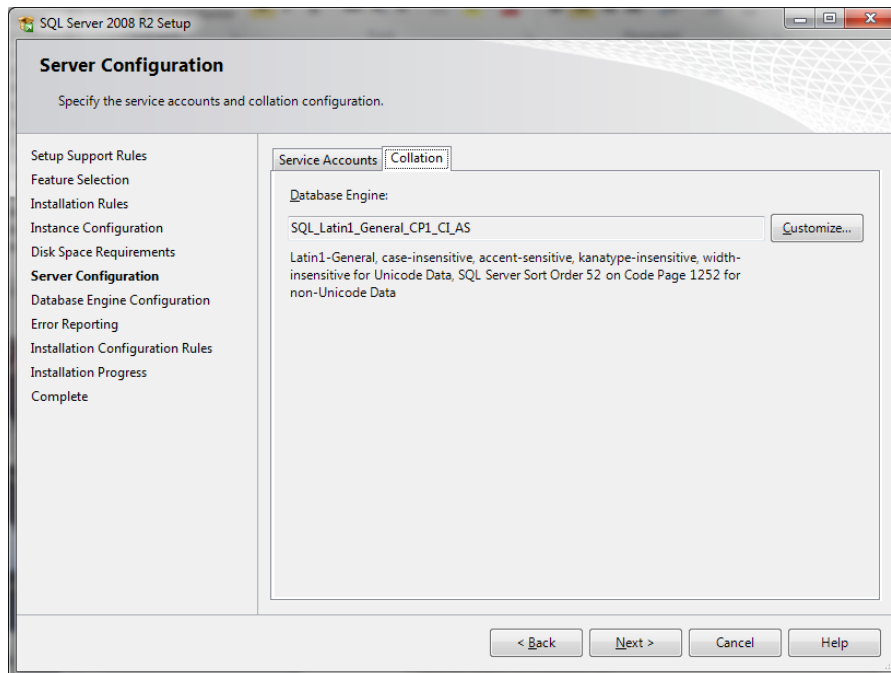
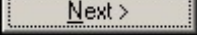


Figure 2-11. SQL Server 2008 R2 Setup - Server Configuration - Collation Tab

18. Click  (The selections should display as shown below).

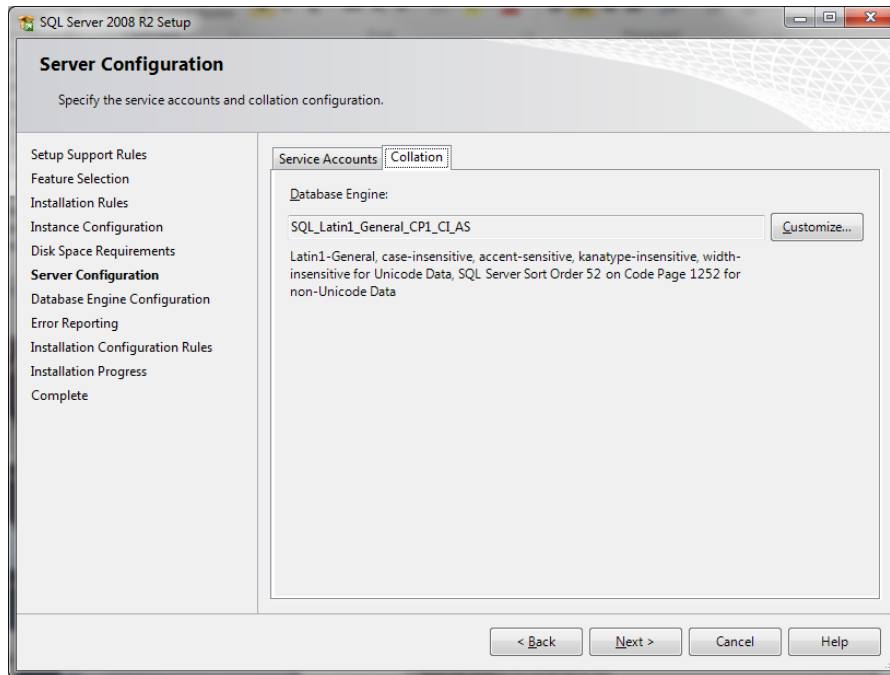
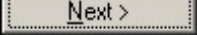


Figure 2-12. SQL Server 2008 R2 Setup - Server Configuration - Collation Tab

19. Click .

20. Select the **Mixed Mode** radio button. Enter (and confirm) a password.

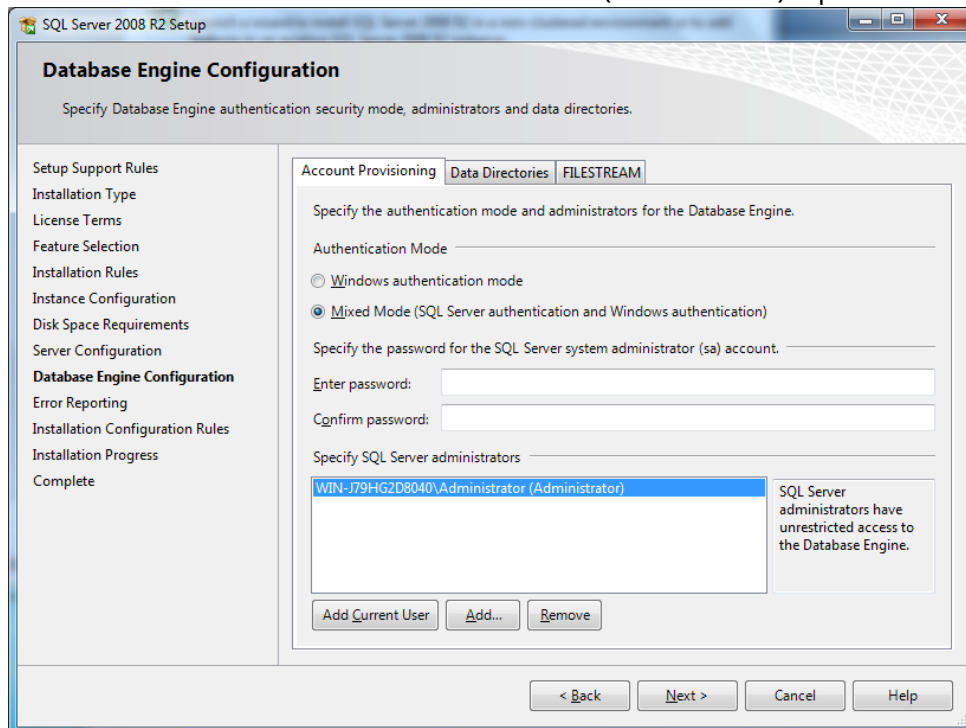



Figure 2-13. SQL Server 2008 R2 Setup - Database Engine Configuration

21. Enter Administrator and a **Strong Password (i.e. Strore123!!!)** Click



22. Click . The installation will begin. (Depending on the system, this may take a few minutes.) When finished, the Complete screen displays:

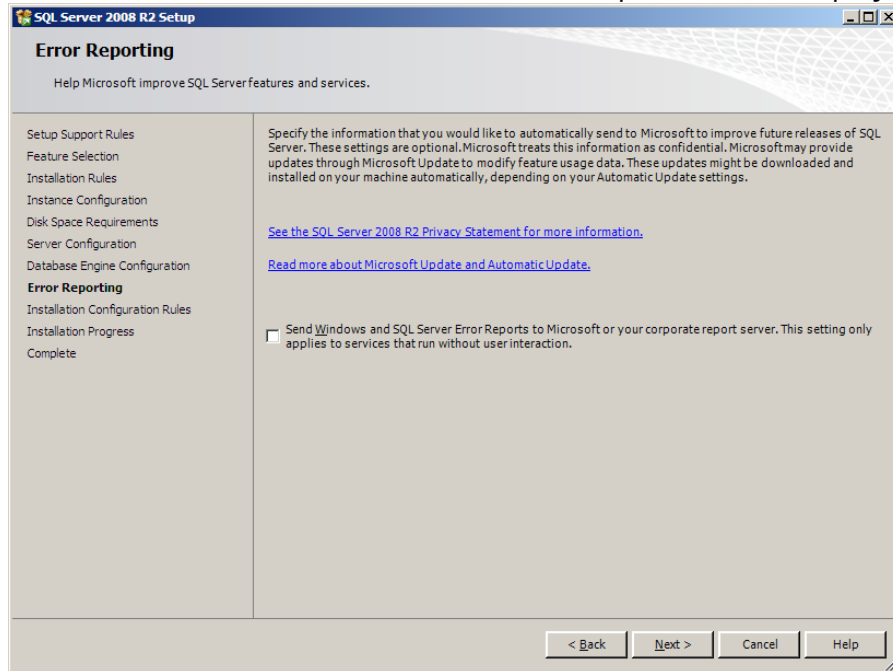


Figure 2-14. SQL Server 2008 R2 Setup - Error Reporting

23. Click the link to view the installation log to verify the installation.

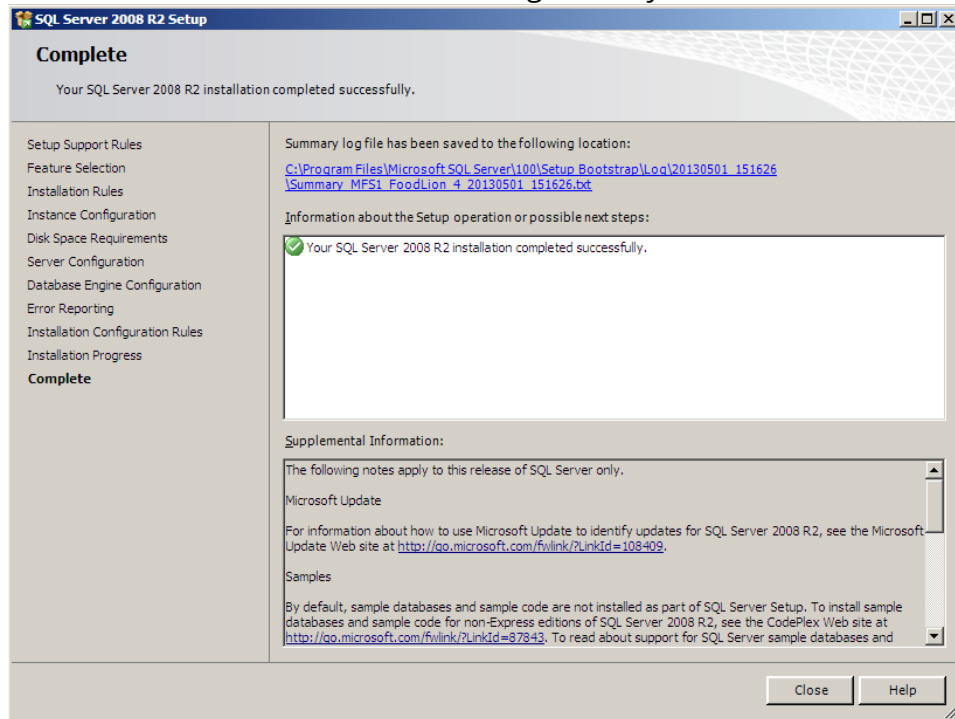


Figure 2-15. SQL Server 2008 R2 Setup - Install Complete

24. Click **Close**.

25. If able, search for product updates. (If not, close.)

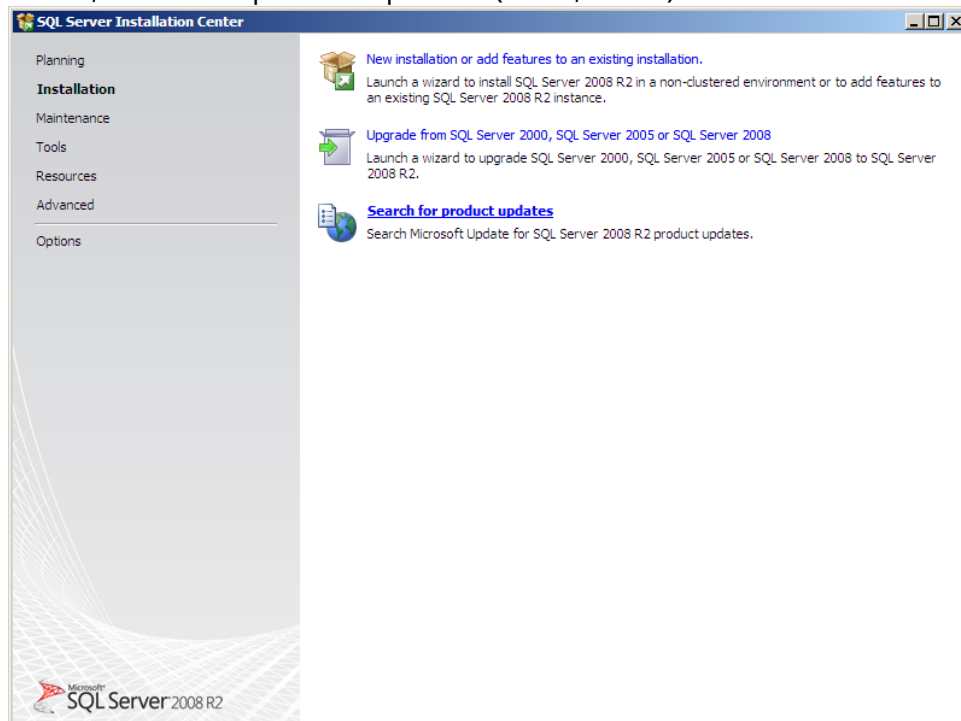


Figure 2-16. SQL Server Installation Center

Chapter 3: Backwards Compatibility (SQLDMO) SQLServer2005_BC.msi

Note:

The SQL Compatibility installs can be found on the **ENCOR 1.0.0.0** Release in the \SQLComp\x32 or \SQLComp\x64 sub folders or the SQL Server 2008 Workgroup Edition CD \1033_ENU_LP \x86\setup\x86 for 32bit and \x64\setup\x64 for 64bit.

1. Run SQLServer2005_BC.msi.
Example from the Workgroups CD
On 32-bit:

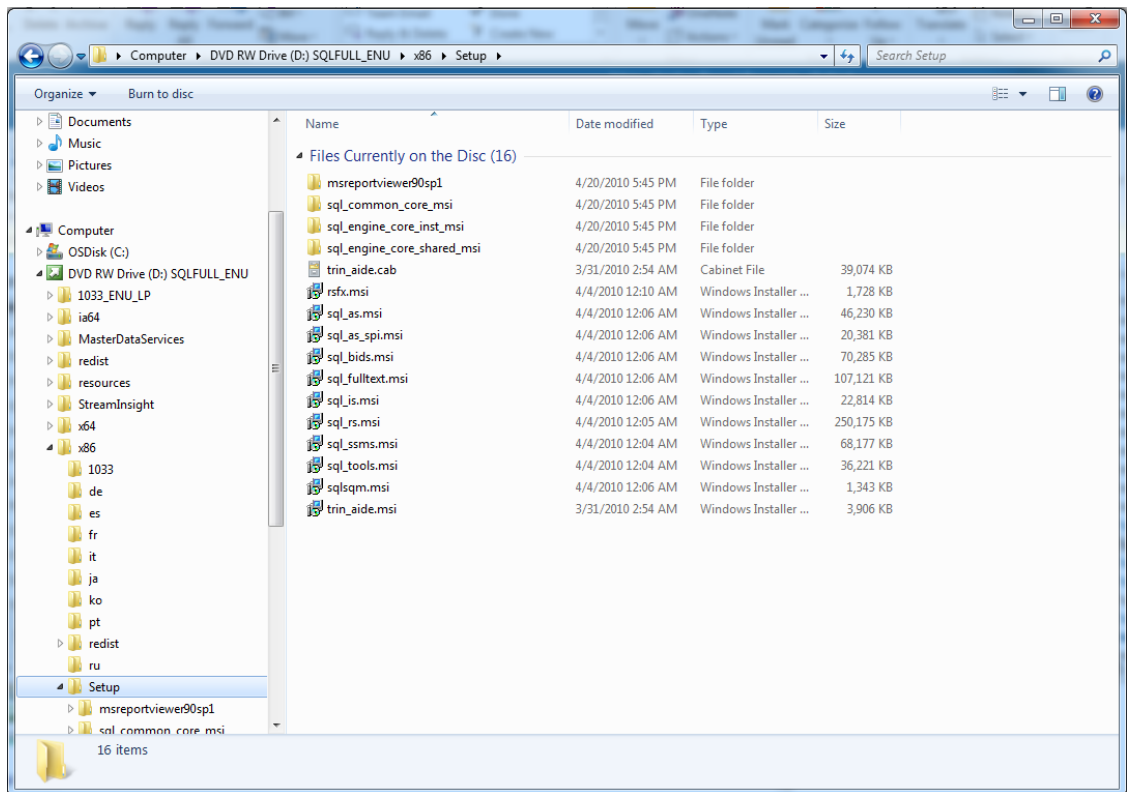


Figure 3-1. SQLServer2005_BC.msi - 32-bit

On 64-bit

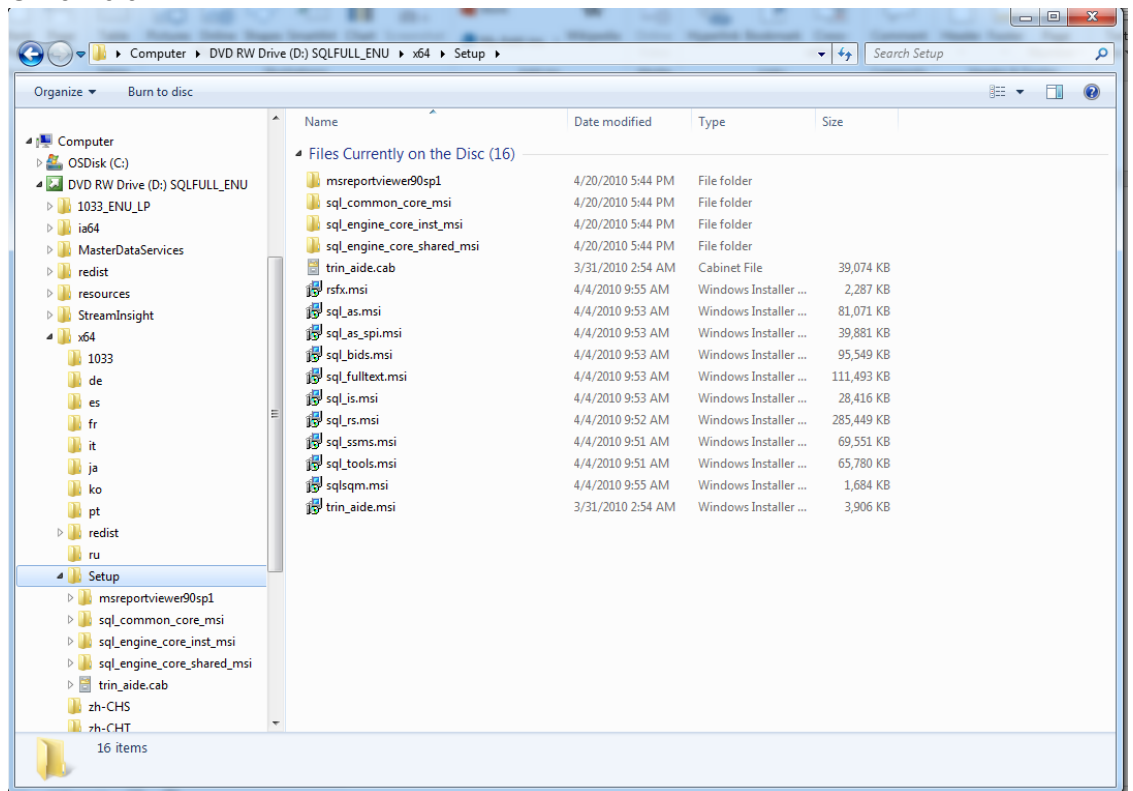


Figure 3-2. SQLServer2005_BC.msi - 64-bit

2. The License Agreement screen displays. Select radio button **I accept the terms in the license agreement**, and click **Next**.

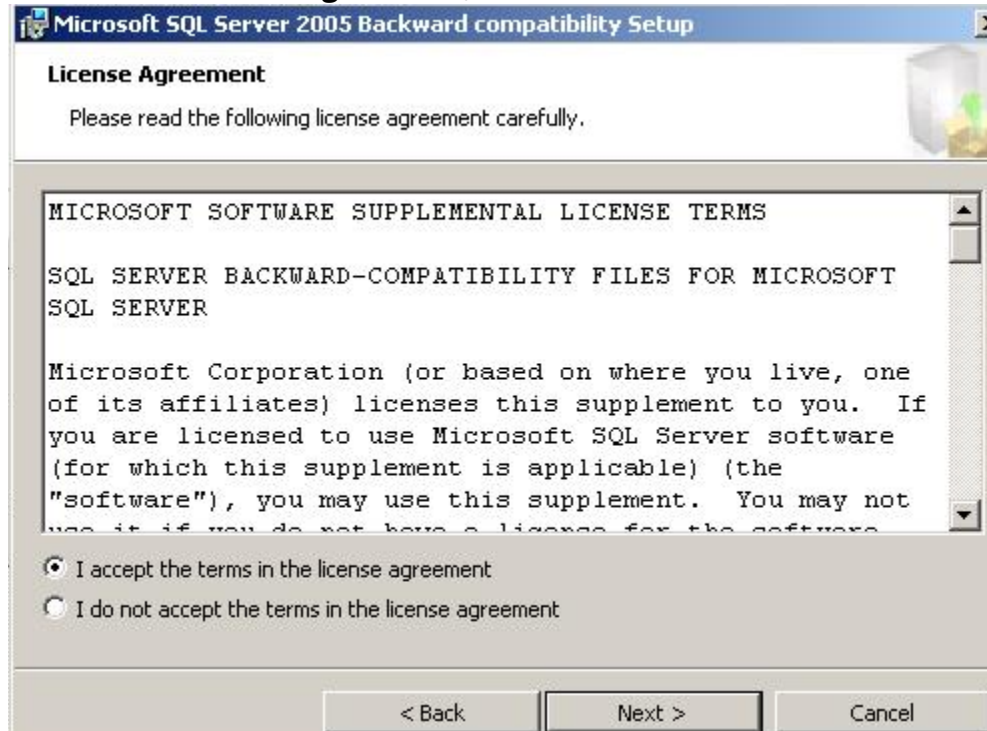


Figure 3-3. SQL Server 2005 Backward compatibility Setup - License Agreement

3. The Registration Information screen displays. Enter user information and then click **Next**.

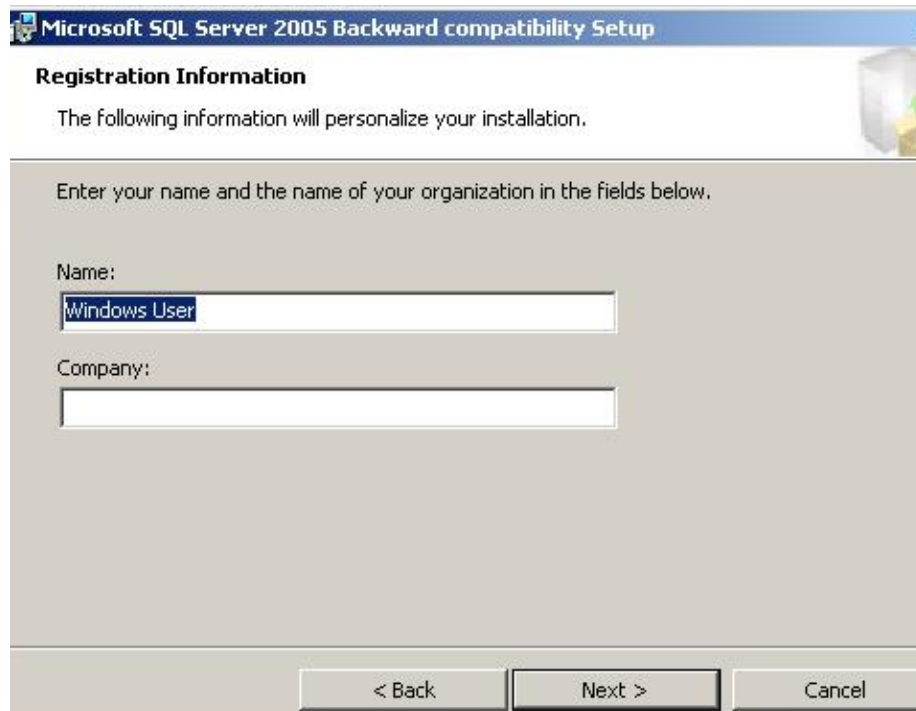


Figure 3-4. SQL Server 2005 Backward compatibility Setup - Registration Information

4. The Microsoft SQL Server 2005 Backward compatibility Setup is displayed. Click **Next**.



Figure 3-5. SQL Server 2005 Backward compatibility Setup - Welcome

5. The Feature Selection screen displays. Click **Next**.

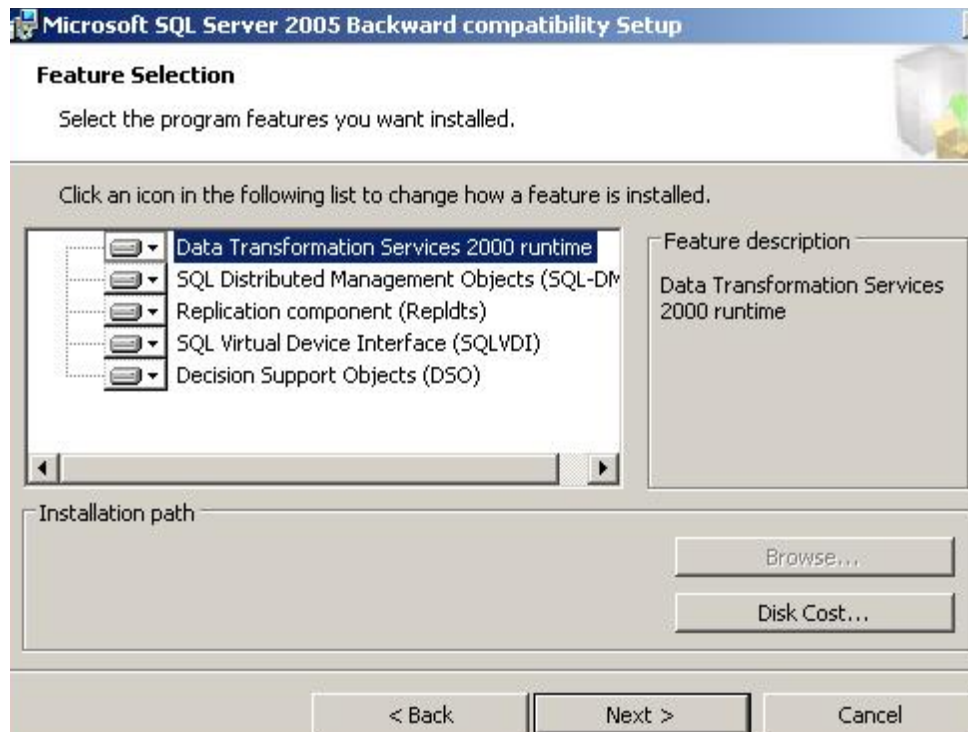


Figure 3-6. SQL Server 2005 Backward compatibility Setup - Feature Selection

6. The Ready to Install the Program screen displays. Click **Install**.

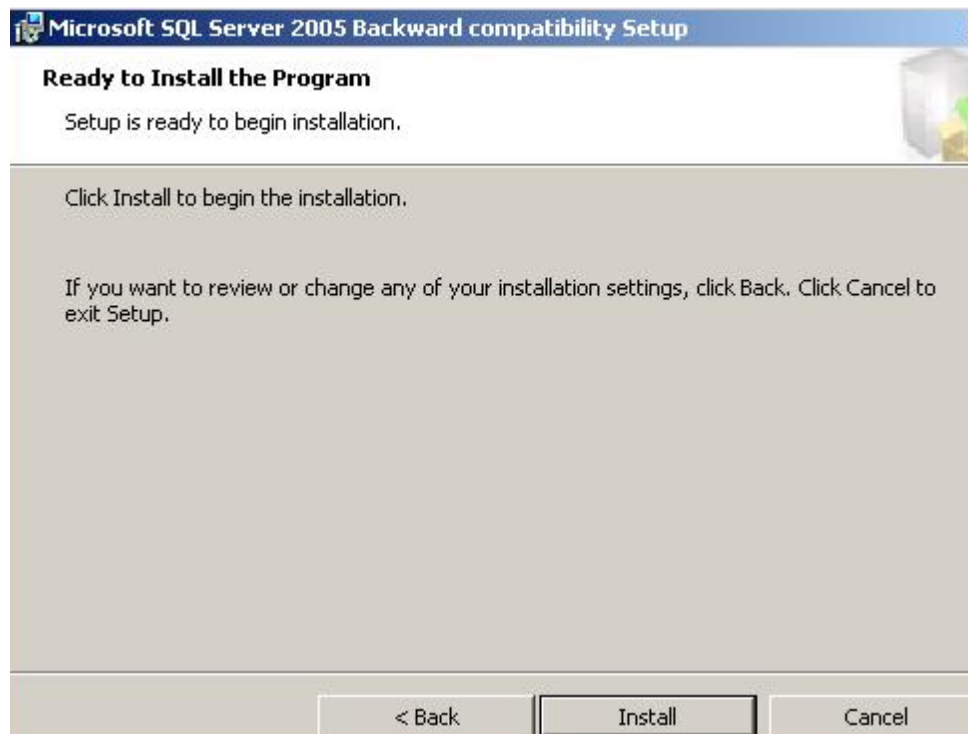


Figure 3-7. SQL Server 2005 Backward compatibility Setup - Ready to Install

7. The Completing the Microsoft SQL Server 2005 Backward compatibility Setup screen displays. Click **Finish**.

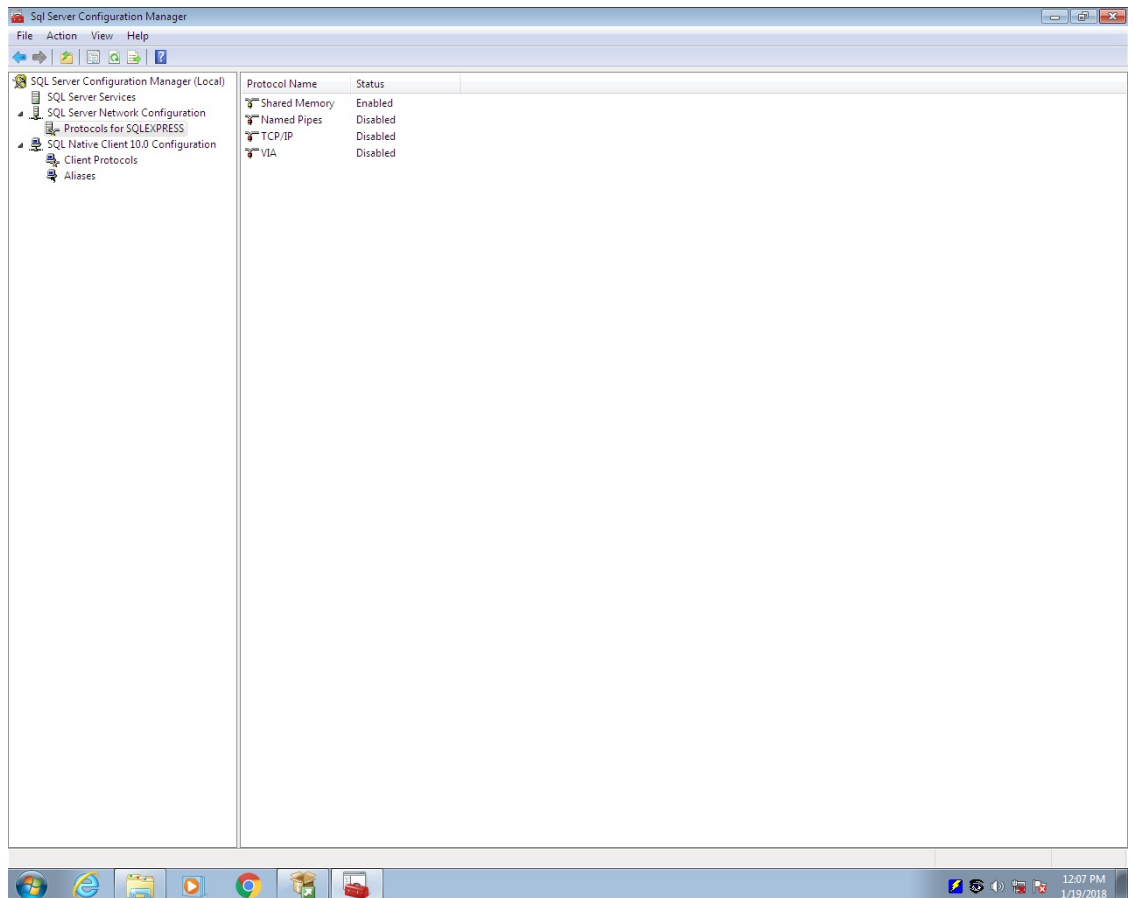


Figure 3-8. SQL Server 2005 Backward compatibility Setup - Completing Setup

Chapter 4: Enable Named Pipes

To allow for backwards compatibility with an LFS workstation, a change must be made once the installation of SQL 2008 has been completed. In previous versions of SQL and Windows, **ENCOR** used Named Pipes as the communications protocol for connections to the Front Office database on MFS1. However, Named Pipes are disabled by default in SQL 2008.

1. Click **START > ALL PROGRAMS > MICROSOFT SQL Server 2008 > Configuration Tools > SQL Server Configuration Manager**.
2. Open the **SQL Server Network Configuration** folder.
3. Click on **Protocols for MSSQLSERVER**.



4.

Figure 4-1. SQL Server Configuration Manager - Protocols for MSSQLSERVER

5. Double-click on **Named Pipes** and change the enabled value from NO to **YES**. Click **Apply**. Click **OK** to acknowledge the warning that changes will not take effect until the service is stopped and restarted.

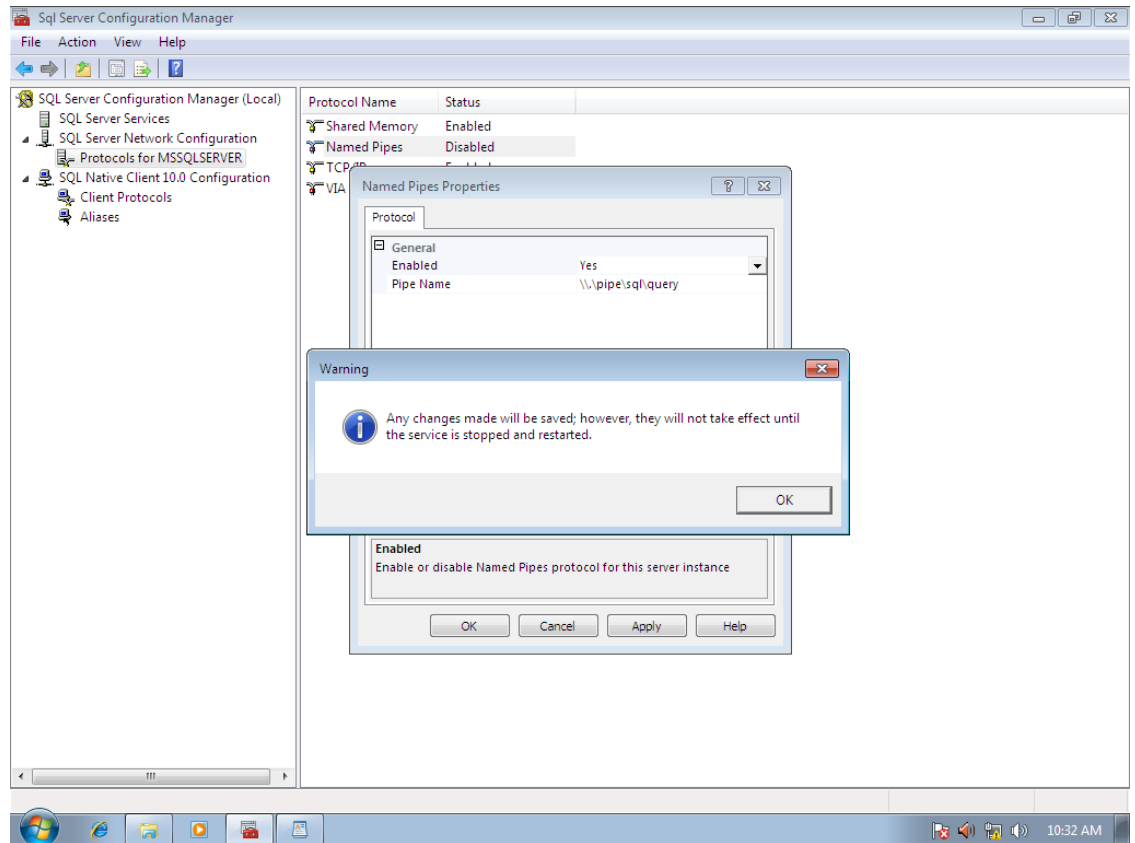


Figure 4-2. Sql Server Configuration Manager - Warning

6. Click **OK**, close all open windows and reboot MFS1.

Chapter 5: Disable Data Execution Prevention (DEP)

It is recommended that DEP be completely disabled on all **ENCOR** PCs.

DEP can be turned on for all applications, turned on for only certain applications, or can be completely turned off.

DEP settings can be changed through the GUI application, but a command level script must be run to completely disable the application.

1. Check the current settings for DEP by opening the **System** application as shown below; then click on **Advanced system settings**.

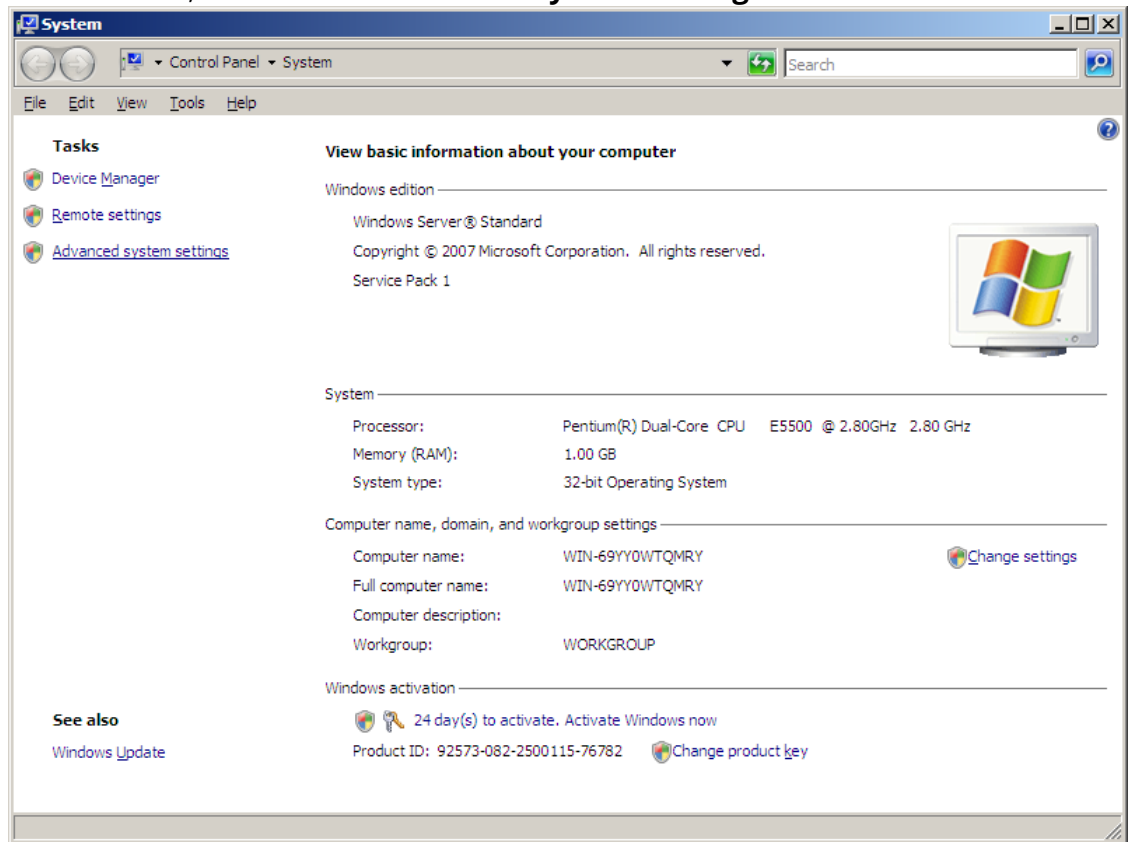


Figure 5-1. Control Panel - System

2. Click on the **Advanced** tab followed by **Settings** in the Performance section.

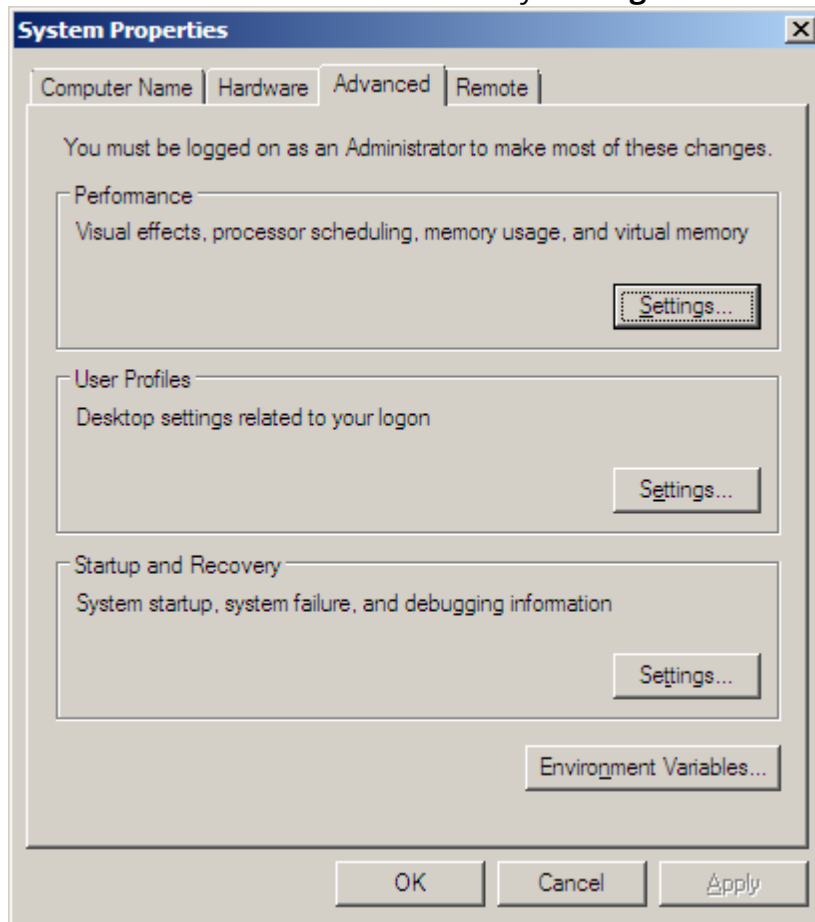


Figure 5-2. System Properties - Advanced Tab

3. Click on the **Data Execution Prevention** tab.

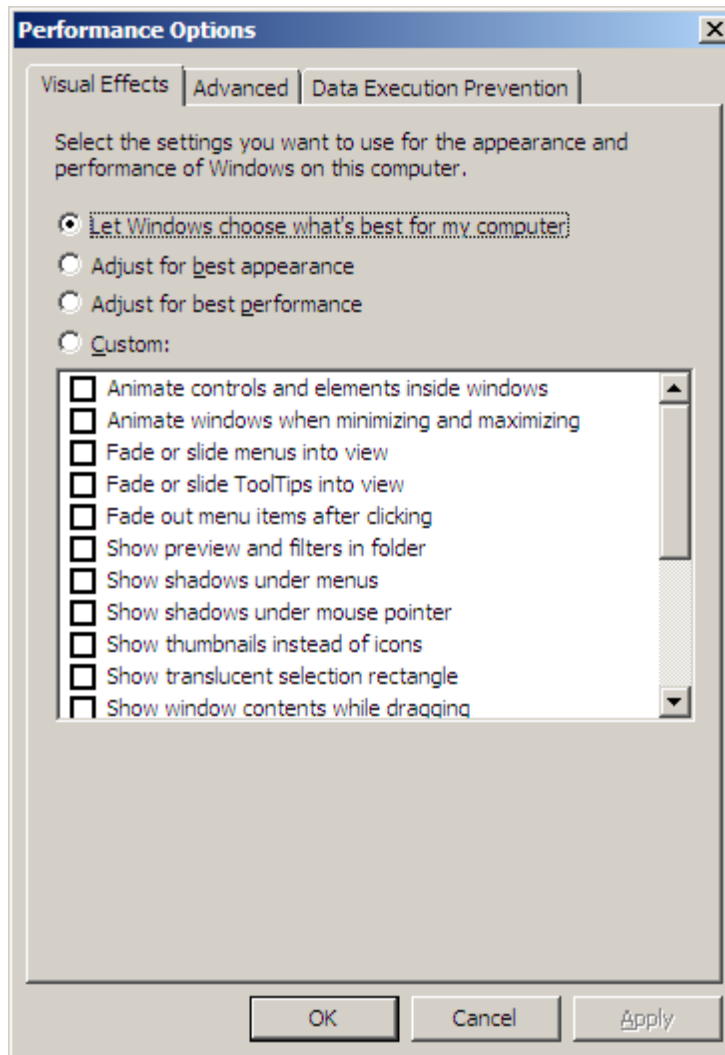


Figure 5-3. Performance Options - Visual Effects Tab

4. In this example, DEP is turned on for essential programs and services only.

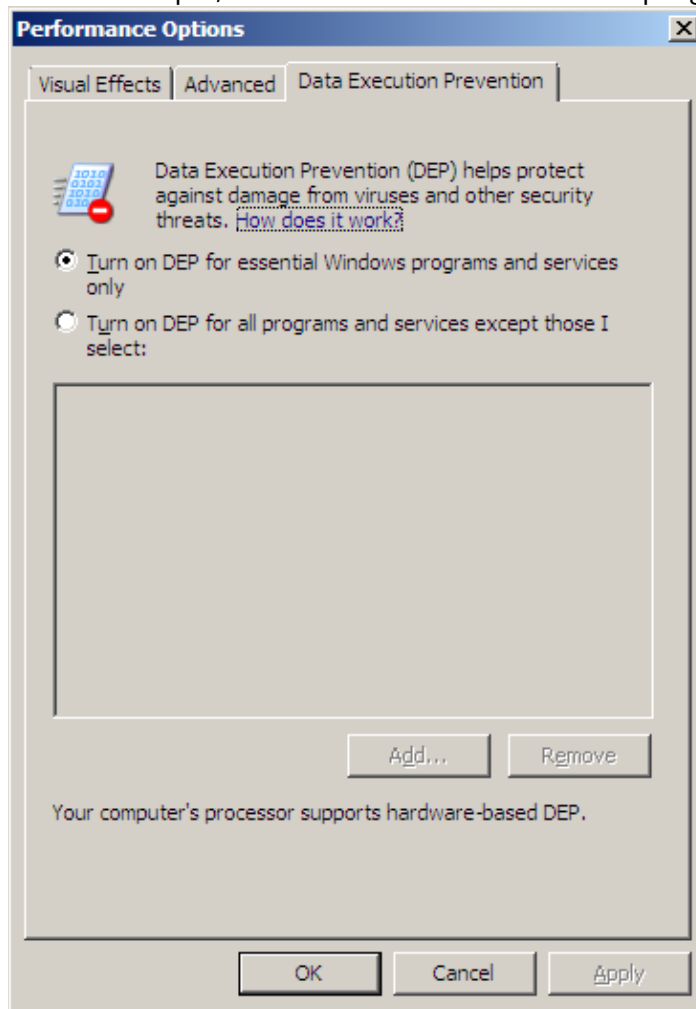


Figure 5-4. Performance Options - Data Execution Prevention Tab

5. Open a Command Line window and enter `bcdedit /set nx AlwaysOff`.

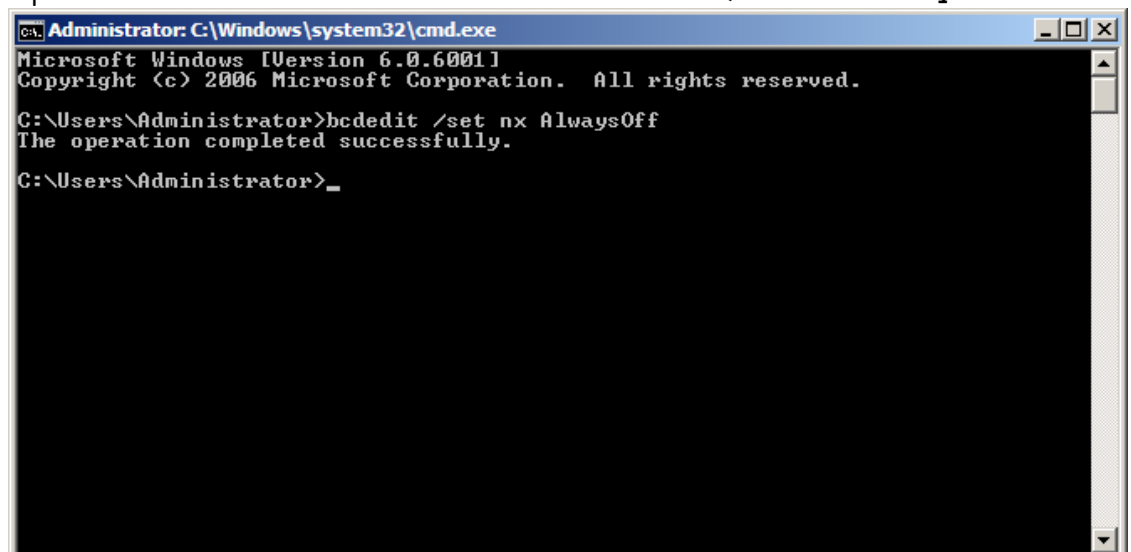
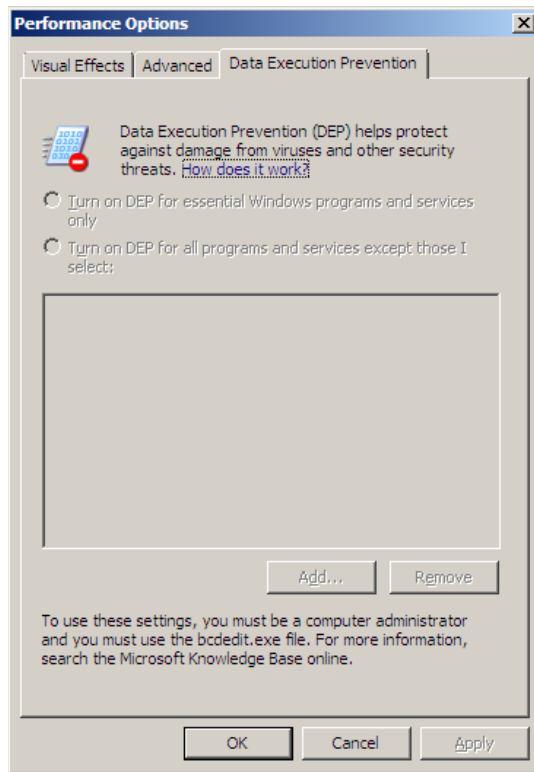


Figure 5-5. Command Prompt

6. Reboot the PC and then check the status of DEP.



Note:

Both options are now grayed out. This indicates that DEP is completely disabled for this machine.

7. The system is now ready for the **ENCOR** installation.



© NCR Corporation, 2018

NCR endeavors to ensure that the information in this document is correct and fairly stated but does not accept liability for any error or omission.

The development of NCR products and services is continuous and published information may not be up to date. It is important to check the current position with NCR. This document is not part of a contract or license, save insofar as may be expressly agreed.

NCR Corporation
2651 Satellite Blvd.
Duluth, GA 30096

P/N 89000924
PIN 45002/074